



Demographic and Income Profile

49 Oxford Dr, Lincolnshire

Prepared by Esri

Latitude: 42.19839

Drive Time: 5 minute radius

Longitude: -87.91659

Summary	Census 2010	2017	2022
Population	4,338	4,488	4,590
Households	1,523	1,607	1,653
Families	1,184	1,233	1,261
Average Household Size	2.76	2.72	2.70
Owner Occupied Housing Units	1,338	1,377	1,408
Renter Occupied Housing Units	185	230	244
Median Age	47.2	49.7	51.2
Trends: 2017 - 2022 Annual Rate	Area	State	National
Population	0.45%	0.17%	0.83%
Households	0.57%	0.17%	0.79%
Families	0.45%	0.06%	0.71%
Owner HHs	0.45%	0.09%	0.72%
Median Household Income	0.58%	1.98%	2.12%

Households by Income	2017		2022	
	Number	Percent	Number	Percent
<\$15,000	76	4.7%	86	5.2%
\$15,000 - \$24,999	44	2.7%	45	2.7%
\$25,000 - \$34,999	74	4.6%	71	4.3%
\$35,000 - \$49,999	67	4.2%	61	3.7%
\$50,000 - \$74,999	165	10.3%	146	8.8%
\$75,000 - \$99,999	140	8.7%	141	8.5%
\$100,000 - \$149,999	220	13.7%	235	14.2%
\$150,000 - \$199,999	205	12.8%	210	12.7%
\$200,000+	617	38.4%	658	39.8%
Median Household Income	\$153,368		\$157,830	
Average Household Income	\$216,594		\$232,541	
Per Capita Income	\$82,966		\$89,546	

Population by Age	Census 2010		2017		2022	
	Number	Percent	Number	Percent	Number	Percent
0 - 4	168	3.9%	160	3.6%	163	3.6%
5 - 9	314	7.2%	255	5.7%	233	5.1%
10 - 14	362	8.3%	355	7.9%	321	7.0%
15 - 19	328	7.6%	334	7.4%	318	6.9%
20 - 24	106	2.4%	159	3.5%	153	3.3%
25 - 34	158	3.6%	227	5.1%	272	5.9%
35 - 44	557	12.8%	421	9.4%	423	9.2%
45 - 54	797	18.4%	748	16.7%	707	15.4%
55 - 64	667	15.4%	751	16.7%	779	17.0%
65 - 74	422	9.7%	591	13.2%	672	14.6%
75 - 84	298	6.9%	321	7.1%	381	8.3%
85+	162	3.7%	169	3.8%	169	3.7%

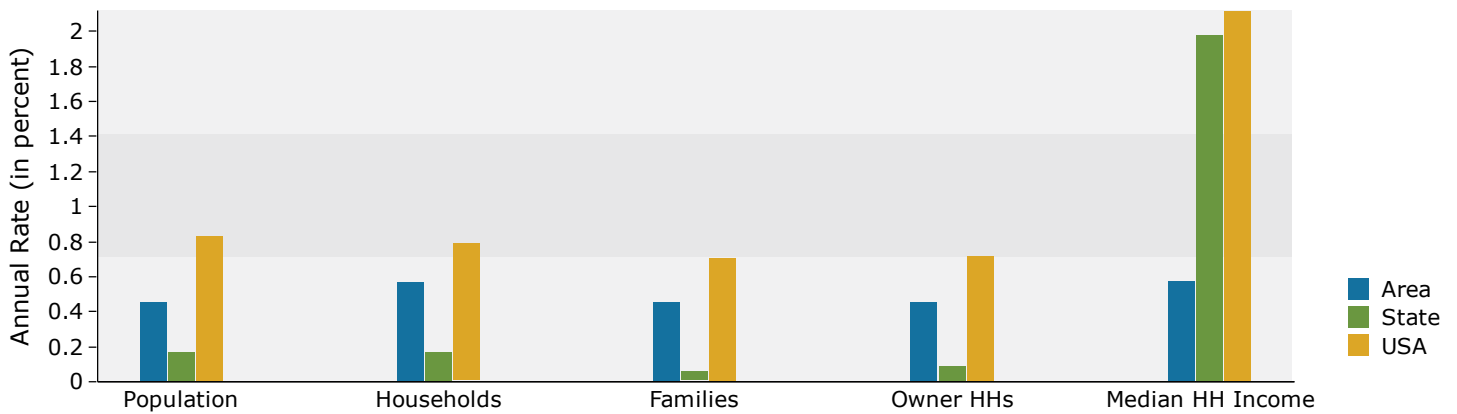
Race and Ethnicity	Census 2010		2017		2022	
	Number	Percent	Number	Percent	Number	Percent
White Alone	3,813	87.9%	3,824	85.2%	3,800	82.8%
Black Alone	44	1.0%	54	1.2%	60	1.3%
American Indian Alone	1	0.0%	1	0.0%	1	0.0%
Asian Alone	402	9.3%	514	11.5%	617	13.4%
Pacific Islander Alone	0	0.0%	0	0.0%	0	0.0%
Some Other Race Alone	21	0.5%	26	0.6%	31	0.7%
Two or More Races	56	1.3%	70	1.6%	81	1.8%
Hispanic Origin (Any Race)	121	2.8%	151	3.4%	182	4.0%

Data Note: Income is expressed in current dollars.

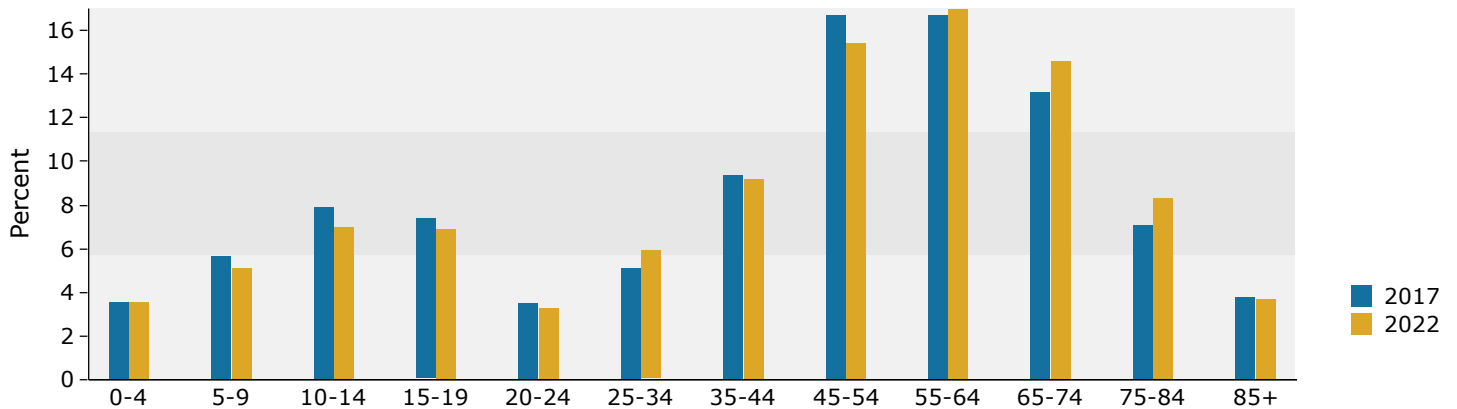
Source: U.S. Census Bureau, Census 2010 Summary File 1. Esri forecasts for 2017 and 2022.

August 17, 2017

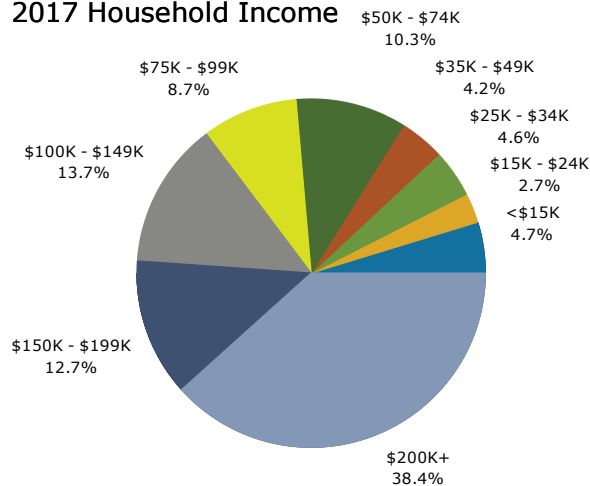
Trends 2017-2022



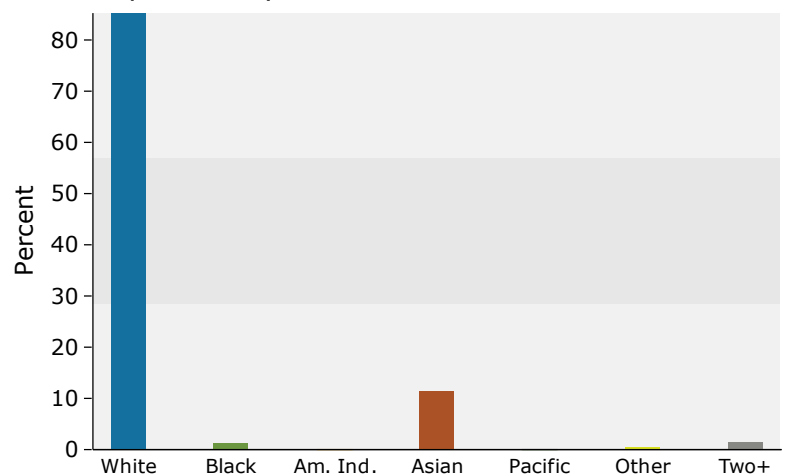
Population by Age



2017 Household Income



2017 Population by Race



2017 Percent Hispanic Origin: 3.4%



Demographic and Income Profile

49 Oxford Dr, Lincolnshire

Prepared by Esri

Latitude: 42.19839

Drive Time: 10 minute radius

Longitude: -87.91659

Summary	Census 2010	2017	2022
Population	41,529	42,284	42,892
Households	15,276	15,821	16,133
Families	11,440	11,712	11,882
Average Household Size	2.65	2.61	2.60
Owner Occupied Housing Units	11,863	11,909	12,108
Renter Occupied Housing Units	3,413	3,912	4,025
Median Age	42.7	44.8	46.1
Trends: 2017 - 2022 Annual Rate	Area	State	National
Population	0.29%	0.17%	0.83%
Households	0.39%	0.17%	0.79%
Families	0.29%	0.06%	0.71%
Owner HHs	0.33%	0.09%	0.72%
Median Household Income	1.10%	1.98%	2.12%

Households by Income	2017		2022	
	Number	Percent	Number	Percent
<\$15,000	548	3.5%	588	3.6%
\$15,000 - \$24,999	624	3.9%	614	3.8%
\$25,000 - \$34,999	714	4.5%	670	4.2%
\$35,000 - \$49,999	918	5.8%	831	5.2%
\$50,000 - \$74,999	1,729	10.9%	1,507	9.3%
\$75,000 - \$99,999	1,823	11.5%	1,797	11.1%
\$100,000 - \$149,999	2,686	17.0%	2,907	18.0%
\$150,000 - \$199,999	2,051	13.0%	2,167	13.4%
\$200,000+	4,728	29.9%	5,052	31.3%
Median Household Income	\$124,352		\$131,319	
Average Household Income	\$181,763		\$196,603	
Per Capita Income	\$69,010		\$74,968	

Population by Age	Census 2010		2017		2022	
	Number	Percent	Number	Percent	Number	Percent
0 - 4	1,994	4.8%	1,851	4.4%	1,866	4.4%
5 - 9	2,860	6.9%	2,535	6.0%	2,354	5.5%
10 - 14	3,246	7.8%	3,107	7.3%	2,836	6.6%
15 - 19	3,168	7.6%	2,935	6.9%	2,786	6.5%
20 - 24	1,971	4.7%	2,097	5.0%	1,848	4.3%
25 - 34	3,564	8.6%	3,802	9.0%	3,929	9.2%
35 - 44	5,338	12.9%	4,907	11.6%	5,232	12.2%
45 - 54	7,542	18.2%	6,489	15.3%	5,896	13.7%
55 - 64	5,758	13.9%	6,724	15.9%	6,691	15.6%
65 - 74	2,832	6.8%	4,199	9.9%	5,187	12.1%
75 - 84	2,136	5.1%	2,368	5.6%	2,949	6.9%
85+	1,120	2.7%	1,270	3.0%	1,318	3.1%

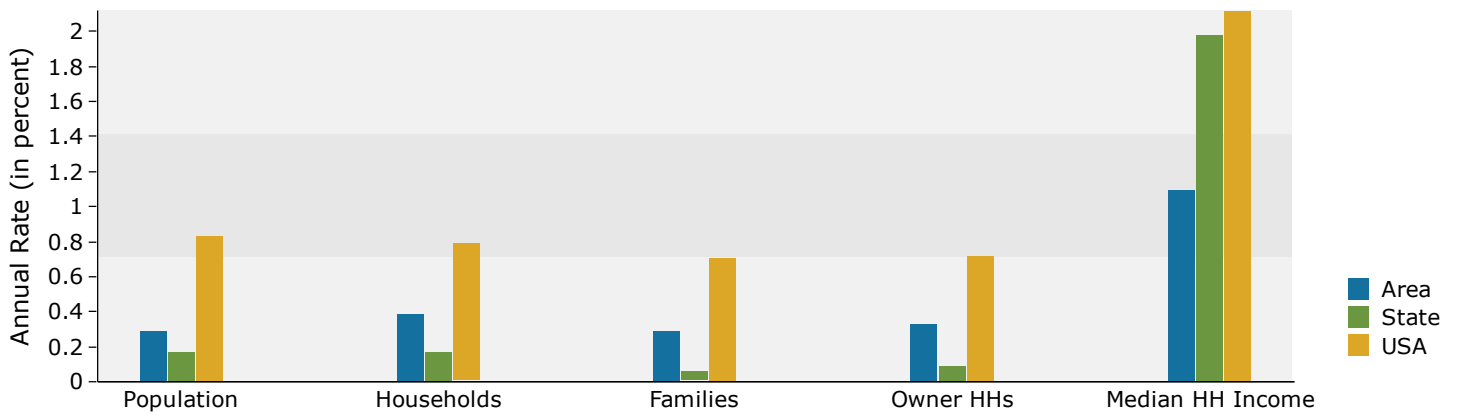
Race and Ethnicity	Census 2010		2017		2022	
	Number	Percent	Number	Percent	Number	Percent
White Alone	33,679	81.1%	32,727	77.4%	31,863	74.3%
Black Alone	575	1.4%	640	1.5%	684	1.6%
American Indian Alone	52	0.1%	54	0.1%	55	0.1%
Asian Alone	5,761	13.9%	7,132	16.9%	8,348	19.5%
Pacific Islander Alone	7	0.0%	8	0.0%	8	0.0%
Some Other Race Alone	840	2.0%	992	2.3%	1,114	2.6%
Two or More Races	615	1.5%	730	1.7%	820	1.9%
Hispanic Origin (Any Race)	2,187	5.3%	2,603	6.2%	2,969	6.9%

Data Note: Income is expressed in current dollars.

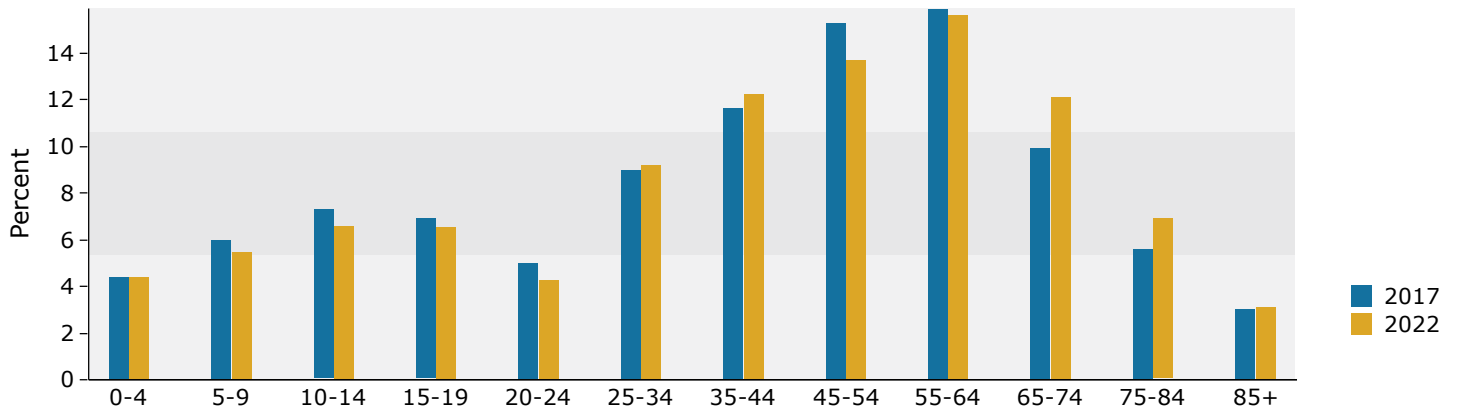
Source: U.S. Census Bureau, Census 2010 Summary File 1. Esri forecasts for 2017 and 2022.

August 17, 2017

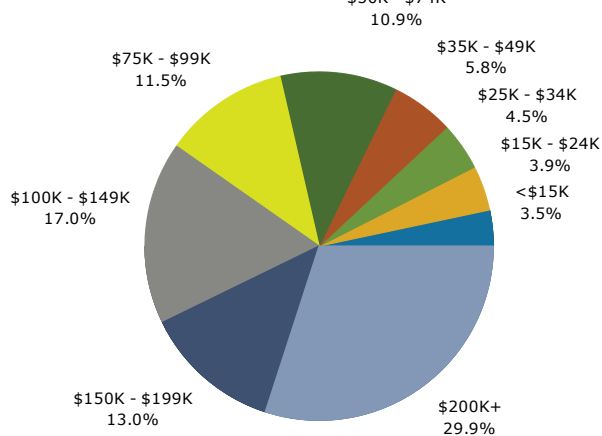
Trends 2017-2022



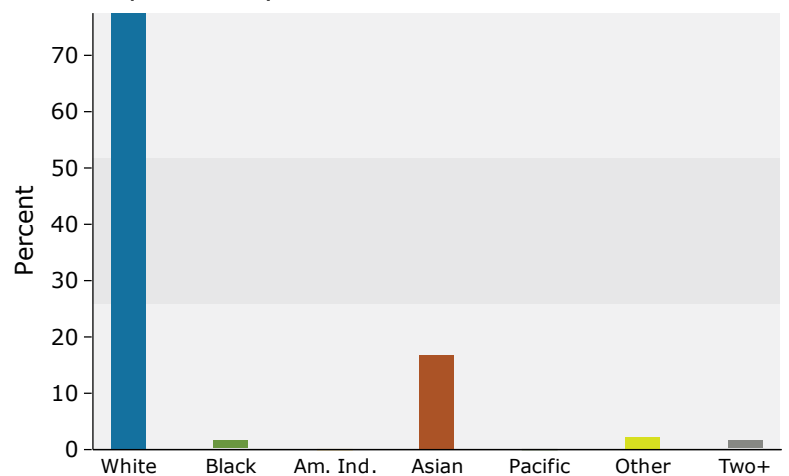
Population by Age



2017 Household Income



2017 Population by Race



2017 Percent Hispanic Origin: 6.2%



Demographic and Income Profile

49 Oxford Dr, Lincolnshire

Prepared by Esri

Latitude: 42.19839

Drive Time: 15 minute radius

Longitude: -87.91659

Summary	Census 2010	2017	2022
Population	197,297	200,380	202,643
Households	72,687	74,506	75,557
Families	53,753	54,522	55,035
Average Household Size	2.67	2.65	2.65
Owner Occupied Housing Units	58,426	58,239	58,894
Renter Occupied Housing Units	14,261	16,267	16,664
Median Age	42.1	43.7	44.7
Trends: 2017 - 2022 Annual Rate	Area	State	National
Population	0.22%	0.17%	0.83%
Households	0.28%	0.17%	0.79%
Families	0.19%	0.06%	0.71%
Owner HHs	0.22%	0.09%	0.72%
Median Household Income	1.25%	1.98%	2.12%

Households by Income	2017		2022	
	Number	Percent	Number	Percent
<\$15,000	3,416	4.6%	3,565	4.7%
\$15,000 - \$24,999	3,636	4.9%	3,514	4.7%
\$25,000 - \$34,999	3,876	5.2%	3,602	4.8%
\$35,000 - \$49,999	6,019	8.1%	5,448	7.2%
\$50,000 - \$74,999	9,042	12.1%	7,884	10.4%
\$75,000 - \$99,999	8,764	11.8%	8,658	11.5%
\$100,000 - \$149,999	13,055	17.5%	14,183	18.8%
\$150,000 - \$199,999	9,279	12.5%	9,934	13.1%
\$200,000+	17,421	23.4%	18,771	24.8%
Median Household Income	\$106,842		\$113,663	
Average Household Income	\$155,762		\$169,735	
Per Capita Income	\$58,482		\$63,858	

Population by Age	Census 2010		2017		2022	
	Number	Percent	Number	Percent	Number	Percent
0 - 4	10,963	5.6%	10,014	5.0%	10,047	5.0%
5 - 9	14,062	7.1%	12,717	6.3%	11,860	5.9%
10 - 14	15,068	7.6%	14,895	7.4%	13,766	6.8%
15 - 19	13,919	7.1%	13,368	6.7%	12,956	6.4%
20 - 24	8,391	4.3%	9,911	4.9%	8,809	4.3%
25 - 34	18,033	9.1%	19,052	9.5%	20,481	10.1%
35 - 44	26,748	13.6%	23,471	11.7%	24,223	12.0%
45 - 54	34,083	17.3%	29,888	14.9%	27,392	13.5%
55 - 64	27,060	13.7%	30,689	15.3%	30,082	14.8%
65 - 74	14,332	7.3%	20,220	10.1%	24,163	11.9%
75 - 84	9,633	4.9%	10,417	5.2%	12,914	6.4%
85+	5,006	2.5%	5,739	2.9%	5,950	2.9%

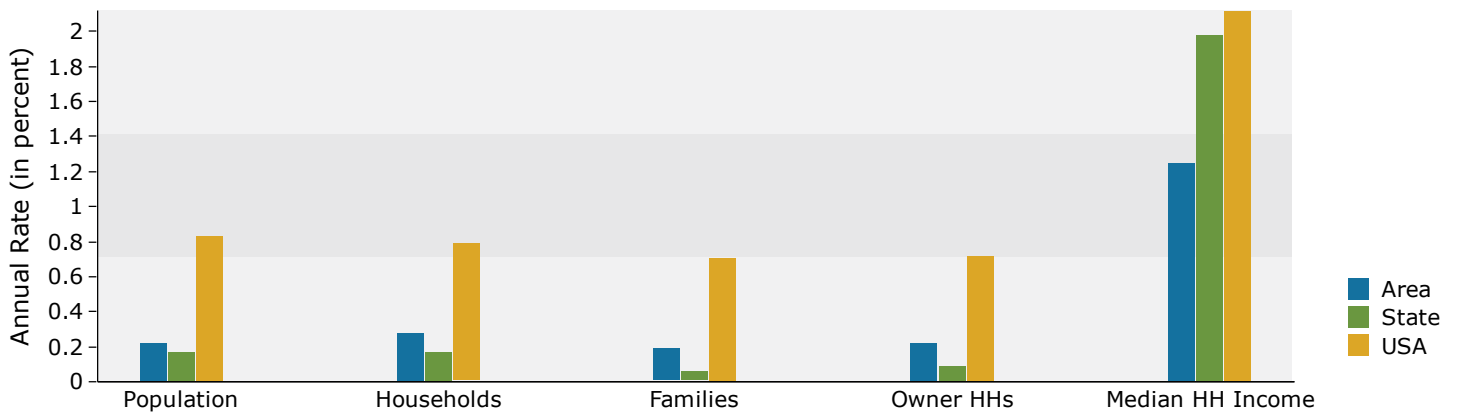
Race and Ethnicity	Census 2010		2017		2022	
	Number	Percent	Number	Percent	Number	Percent
White Alone	159,838	81.0%	155,730	77.7%	152,105	75.1%
Black Alone	2,795	1.4%	2,935	1.5%	3,014	1.5%
American Indian Alone	493	0.2%	515	0.3%	529	0.3%
Asian Alone	21,842	11.1%	26,964	13.5%	31,404	15.5%
Pacific Islander Alone	38	0.0%	43	0.0%	45	0.0%
Some Other Race Alone	8,815	4.5%	10,127	5.1%	11,060	5.5%
Two or More Races	3,475	1.8%	4,067	2.0%	4,485	2.2%
Hispanic Origin (Any Race)	22,237	11.3%	25,609	12.8%	28,295	14.0%

Data Note: Income is expressed in current dollars.

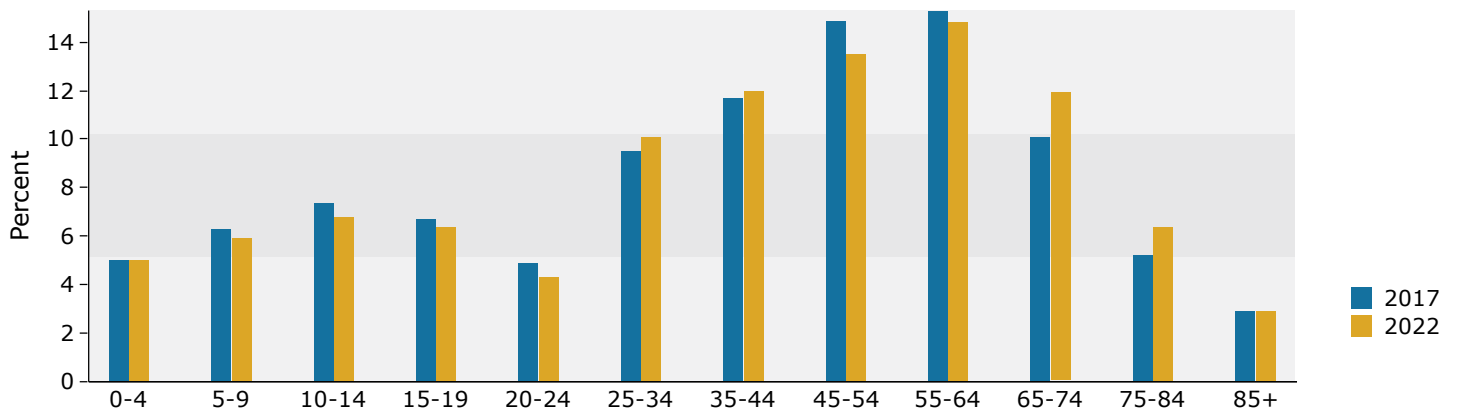
Source: U.S. Census Bureau, Census 2010 Summary File 1. Esri forecasts for 2017 and 2022.

August 17, 2017

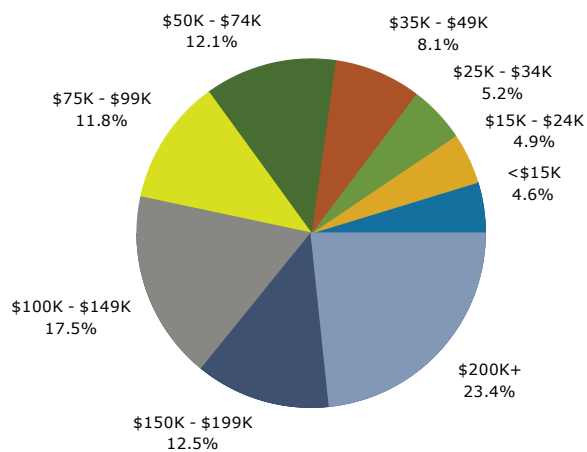
Trends 2017-2022



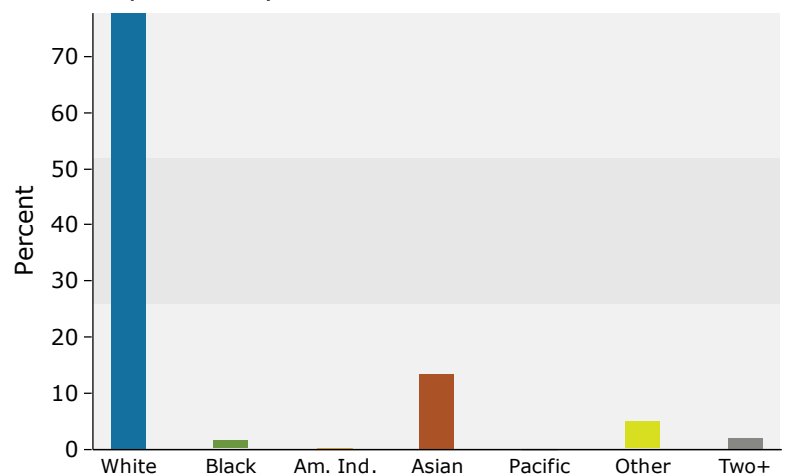
Population by Age



2017 Household Income



2017 Population by Race



2017 Percent Hispanic Origin: 12.8%